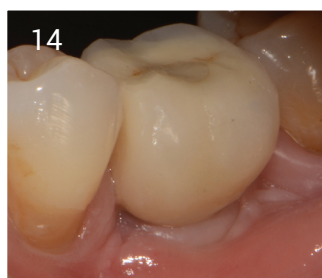
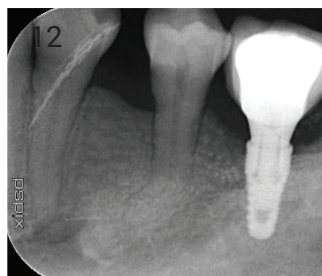
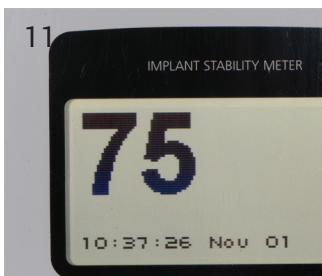
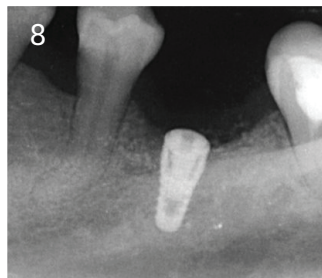
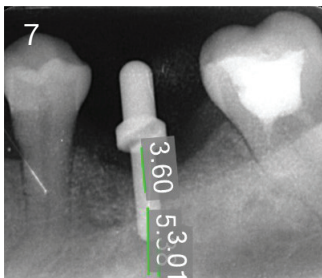
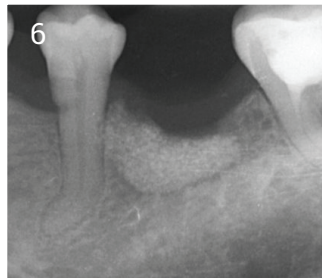
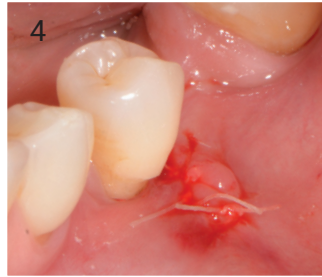
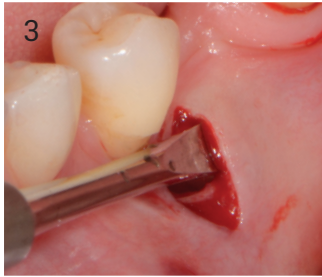
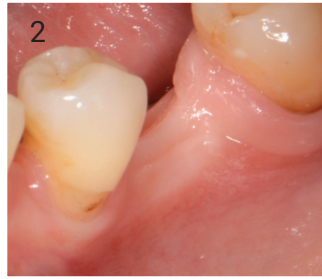
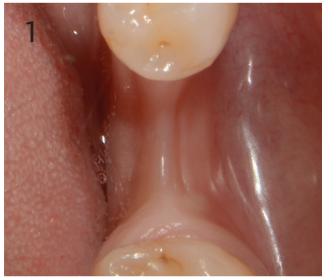


Tunnel Graft Case

1. Narrow ridge due to modelling
2. Narrow ridge and reduced keratinized gingiva
3. Incision distal to 5, lift periosteum
4. ethoss® placed with graft gun and sutured closed
5. Graft gun and ethoss® prior to mixing with Saline
6. Radiograph of graft in-situ
7. Assessment of implant placement
8. Radiograph of implant placed
9. Healing at 10 weeks post placement
10. Cap removed to take impression, there was no soft tissue grafting
11. Osstell reading 75 IDQ
12. Silver plug placement (Anti-bacterial)
13. Fitted 9 months
14. Loaded 9 Months

Case by Dr. Peter Fairbairn,
Scarsdale Dental Aesthetic & Implant Clinic



A biphasic matrix for true bone regeneration.
Built in membrane function, high graft stability.

ethoss Regeneration Ltd
8 Ryefield Court, Silsden, BD20 0DL, UK
www.ethoss.co • info@ethoss.co