

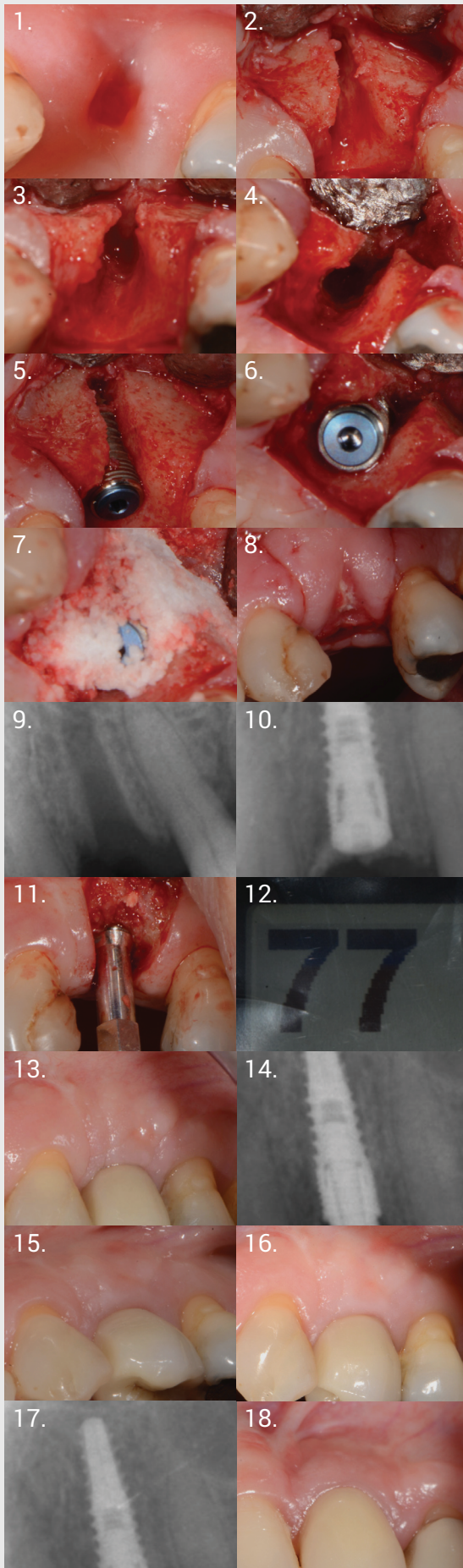
The body wants to heal. Let's work with it.



Upper Pre-Molar Case

1. 3 weeks post extraction. Soft tissue healing
2. Site specific flap to show bone defect
3. Occlusal view of defect
4. Osteotomy showing angle change mesio-palatally
5. Implant placed for optimal position for restoration
6. Implant placed for optimal position for restoration
7. Grafted with ethoss particulate
8. After 5 days at suture removal, improved profile
9. Radiograph showing placement
10. Radiograph showing graft
11. At 12 weeks, flap raised to remove excess new bone and Osstell reading
12. Osstell reading at 12 weeks (77 ISQ)
13. Loading with an E-max crown
14. Radiograph at loading
15. Loaded 1 year, good attached gingiva
16. Close up of soft tissue aesthetics
17. Radiograph at 1 year loaded
18. Loaded 8 years, showing retention of tissue both hard and soft, functional loading

Case by Dr. Peter Fairbairn,
Scarsdale Dental Aesthetic & Implant Clinic



A biphasic matrix for true bone regeneration.
Built in membrane function, high graft stability.

ethoss®

Regenamed Ltd

8 Ryefield Court, Silsden, BD20 0DL

www.ethoss.co

info@ethoss.co