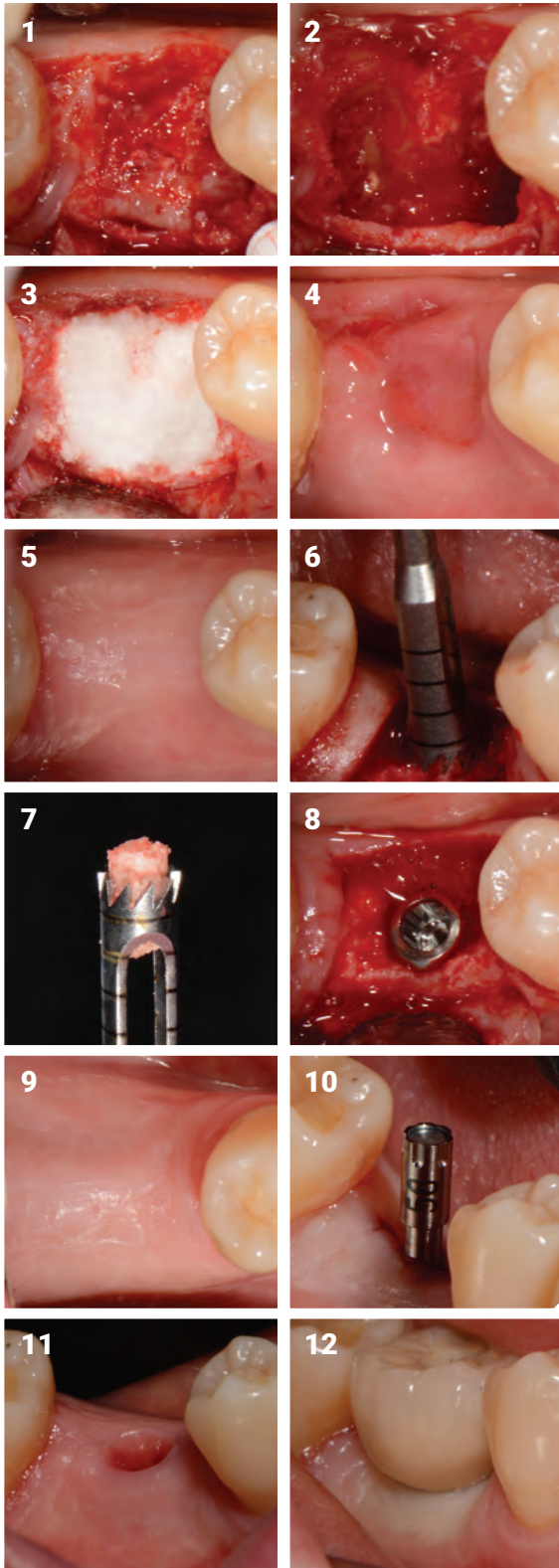




The body wants to heal, let's work with it.

Posterior Socket Graft Case Study

1. 3 weeks post extraction flap raised to show granulation tissue.
2. Cleaned site with degranulation bur.
3. Grafted with ethoss® to ridge level.
4. Healed site 5 days later suture removal.
5. 12 weeks later healed site.
6. Core Sample being taken.
7. Trepine with Core.
8. Placed, Osstell reading at 62 ISQ.
9. Ready to load at 10 weeks , healthy attached gingiva.
10. Osstell reading taken now 75 ISQ.
11. Healed peri-implant soft tissue.
12. Loaded Case.



A biphasic matrix for true bone regeneration.
Built in membrane function, high graft stability.

Ethoss Regeneration Ltd

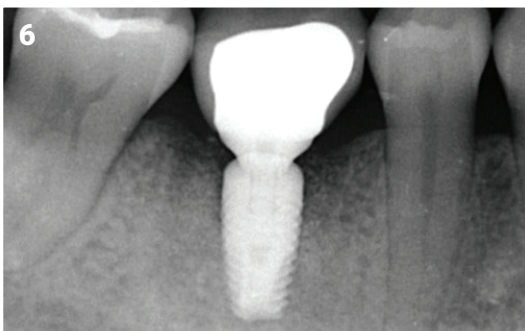
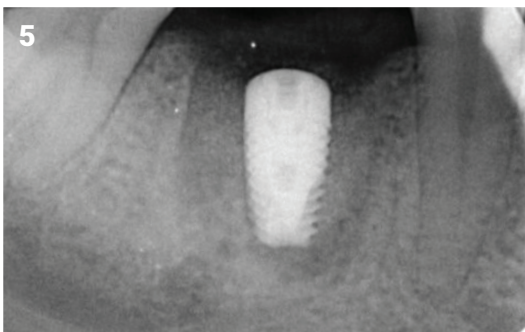
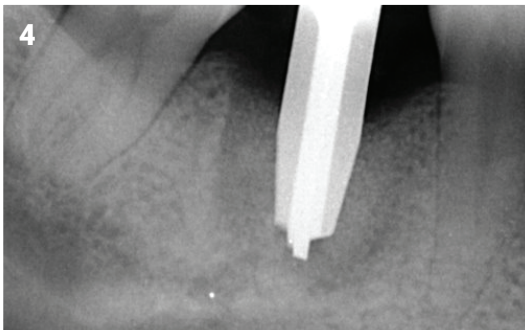
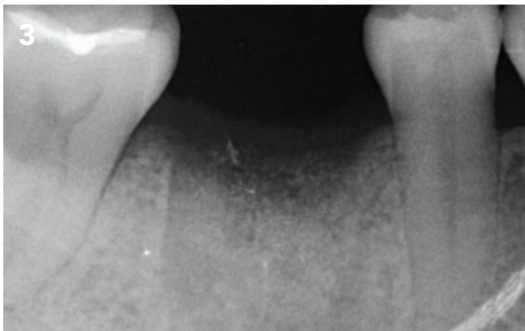
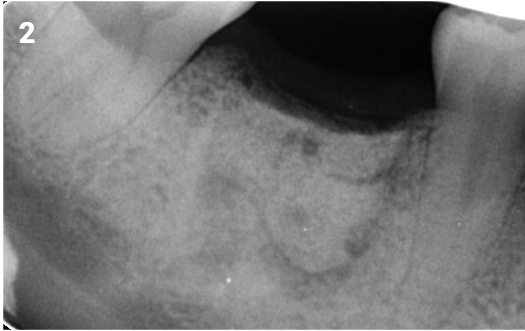
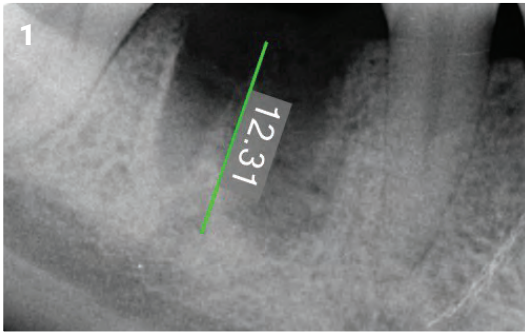
8 Ryefield Court, Silsden, BD20 0DL , UK

www.ethoss.co • info@ethoss.co

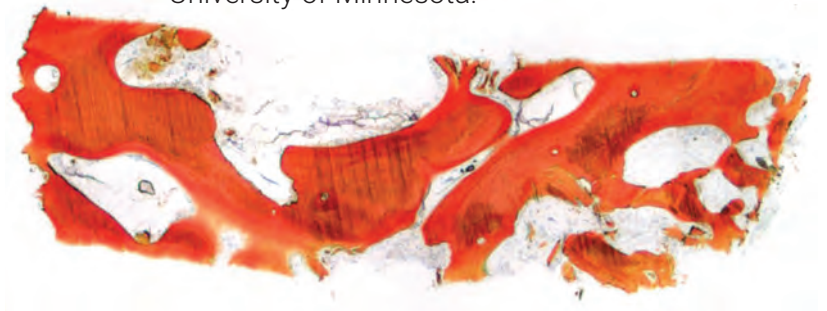
Posterior Socket Graft Case Study

Radiographs

1. Radiograph of cleaned site
2. Radiograph of grafted site
3. Radiograph at 12 weeks
4. Osteotomy in core site
5. Radiograph of placed Implant
6. Radiograph of loaded case



Histology of core done by Hari Prasad,
University of Minnesota.



A biphasic matrix for true bone regeneration.
Built in membrane function, high graft stability.

Ethoss Regeneration Ltd

8 Ryefield Court, Silsden, BD20 0DL, UK
www.ethoss.co • info@ethoss.co